

STAGE 2: GARFORTH TO WOODLESFORD



VIEW FROM THE LIMESWAY

KEY

- Slow Tour route
On-road / Traffic-free
- National Cycle Network
On-road / Traffic-free
- National Cycle Network
route number
- Café / Toilets
- Supermarket / Shop
- Bike shop / Play area
- Railway with station
- Access point
- Cycle parking
- Take care here
- Nature Reserve / Viewpoint /
Picnic spot

ENJOY THE SLOW TOUR ON THE NATIONAL CYCLE NETWORK!

The Slow Tour of Yorkshire is inspired by the Grand Depart of the Tour de France in Yorkshire in 2014. Funded by Public Health Teams at Leeds City Council, the Slow Tour aims to increase accessible cycling opportunities across the region on the National Cycle Network. The Network is more than 14,000 miles of traffic-free paths, quiet lanes and on-road walking and cycling routes across the UK.



BIKE HIRE

You can hire bikes from Cycle Point at Leeds Train station, a few minutes by train from Garforth and Woodlesford stations.

www.cyclepoint.co.uk

THINGS TO SEE AND DO

Sculptures

Continue past Woodlesford on the Transpennine Trail and you may spot an elephant and gorilla waiting for you!

Play Areas

There are playgrounds along the route in Garforth, Kippax, and Allerton Bywater.

Leventhorpe Vineyard

Just outside Woodlesford is Leventhorpe Vineyard, Yorkshire's longest established commercial vineyard, open to the public.

TAKE A BREAK!

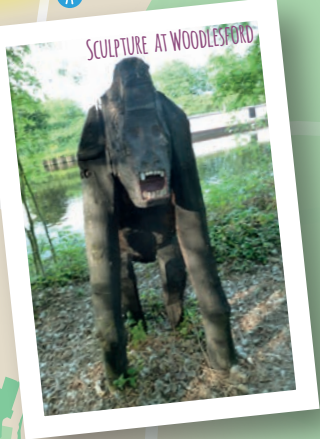
- Cafés and pubs in Garforth
- Café at Allerton Bywater
- RiversMEET craft Café at Methley
- Cafés and pubs in Woodlesford

TAKE CARE!

Take care cycling on the A642 to Woodlesford station/Leventhorpe Vineyard.



FAMILY ENJOYING THE ROUTE



SCULPTURE AT WOODLESFORD



MAKING IT EASIER FOR YOU

This route is not suitable for bikes with narrow tyres or wider bikes such as trikes.

Please try one of our other Slow Tour routes at www.sustrans.org.uk/slowtourofyrkshire

GARFORTH TO WOODLESFORD

Garforth to Woodlesford 9 miles, about 2 hours

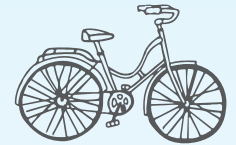
This delightful traffic-free route travels from the small town of Garforth just outside Leeds through lovely countryside, passing a nature reserve and an RSPB site, along a river and canal ending at Woodlesford locks.

- Exit Garforth station and follow the White Rose [WYCC] signs until you pick up signs to National Route 697 and The Linesway and join this lovely Greenway.
- You soon enter Townclose Hills Nature Reserve (or Billy Wood as it's known locally) on the edge of Kippax. From the grassland plateau, there are beautiful near-panoramic views of the surrounding countryside.
- Continue along the Linesway to Allerton Bywater, where there is a café if you want to take a break. Turn right at Owl Wood Cottage towards Woodend and continue until you pick up signs to National Route 67, part of the Transpennine Trail.
- Pause for a short detour at Woodend to visit St Aidans Park and RSPB Reserve on the banks of the River Aire. The reserve is teeming with wildlife in a stunning landscape. Great spot for a picnic! If you prefer a café, continue along the route until you see signs to the National Route 67 to Methley on the left. Take this route and where it joins the A639, turn right and the café is 50m on the right hand side.
- Continue along the route, cross the River Aire and follow the river, then the canal, to Woodlesford, ending your journey at Woodlesford Locks. Carry on 5 minutes further to check out the gorilla and elephant sculptures!
- Hop on a train from Woodlesford station, or, if you're feeling energetic continue along National Route 67 to Leeds.



Garforth to Woodlesford

SLOW TOUR



OF YORKSHIRE
ON THE NATIONAL CYCLE NETWORK



The Slow Tour is a guide to 21 of the best cycle routes across Yorkshire on the National Cycle Network.

The routes have something for everyone, whether you are a family, new to cycling or a regular cyclist. You can take public transport to the start of most routes and hire bikes there too.

**Tourist attractions ● heritage sites
cafés and pubs ● picnic spots ● canals
museums ● playgrounds ● artwork
and more!**

If you like this route, try out the other 20!

Download your free maps at
www.sustrans.org.uk/slowtourofyorkshire



Some of this route forms part of the national multi-user Trans Pennine Trail
www.transpenninetrail.org.uk

**ENJOY A GREAT
CYCLING DAY OUT...
AT YOUR OWN PACE!**



Photography: Cover The Linesway
Registered charity number 326550 (England and Wales) SCO39263 (Scotland)



STAGE 2